

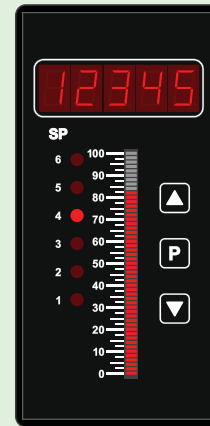
## TEX - BAR

### BAR GRAPH PROCESS CONTROLLER

This controller is ideal for a variety of applications where instant, visual indication of the process variable is required. It is particularly suited to level measurement or rate movement indication.

<b>Input signal</b>	Current (0/4-20mA) Voltage (0-2/10V)
<b>Excitation</b>	24V DC (50mA max)
<b>Resolution</b>	16-bit
<b>Sampling rate</b>	10Hz
<b>Accuracy</b>	0.05%
<b>Temp drift</b>	Typically 50ppm/°C
<b>Linearization</b>	Linearization tables up to 32-point, (program with serial port)
<b>Relay outputs</b>	2 x 5A form A or 4 x 5A form A

- 3 buttons
- 8mm LED display, 5 digits
- 0-100% bar graph
- 6 setpoint indicator LED's
- IP65 dust & splash-proof
- Panel mount case 96 x 48 x 119.5mm (H x W x D)



#### -----OPTIONAL-----

<b>Analog output</b>	Isolated 16-bit 4-20 mA or 0-10V output
<b>Serial port</b>	Isolated RS232/485

CODE	DESCRIPTION	POWER*
TEX - BAR - R2 - HV	2 x relays	HV
TEX - BAR - R2 - LV	2 x relays	LV
TEX - BAR - R2A - HV	2 x relays, 1 x analog output	HV
TEX - BAR - R2A - LV	2 x relays, 1 x analog output	LV
TEX - BAR - R2S - HV	2 x relays, 1 x serial port	HV
TEX - BAR - R2S - LV	2 x relays, 1 x serial port	LV
TEX - BAR - R2AS - HV	2 x relays, 1 x analog output, 1 x serial port	HV
TEX - BAR - R2AS - LV	2 x relays, 1 x analog output, 1 x serial port	LV
TEX - BAR - R4 - HV	4 x relays	HV
TEX - BAR - R4 - LV	4 x relays	LV
TEX - BAR - R4A - HV	4 x relays, 1 x analog output	HV
TEX - BAR - R4A - LV	4 x relays, 1 x analog output	LV
TEX - BAR - R4S - HV	4 x relays, 1 x serial port	HV
TEX - BAR - R4S - LV	4 x relays, 1 x serial port	LV
TEX - BAR - R4AS - HV	4 x relays, 1 x analog output, 1 x serial port	HV
TEX - BAR - R4AS - LV	4 x relays, 1 x analog output, 1 x serial port	LV

\*Power supply: **HV** (85-265V AC / 95-370V DC), **LV** (15-48V AC / 10-72V DC)