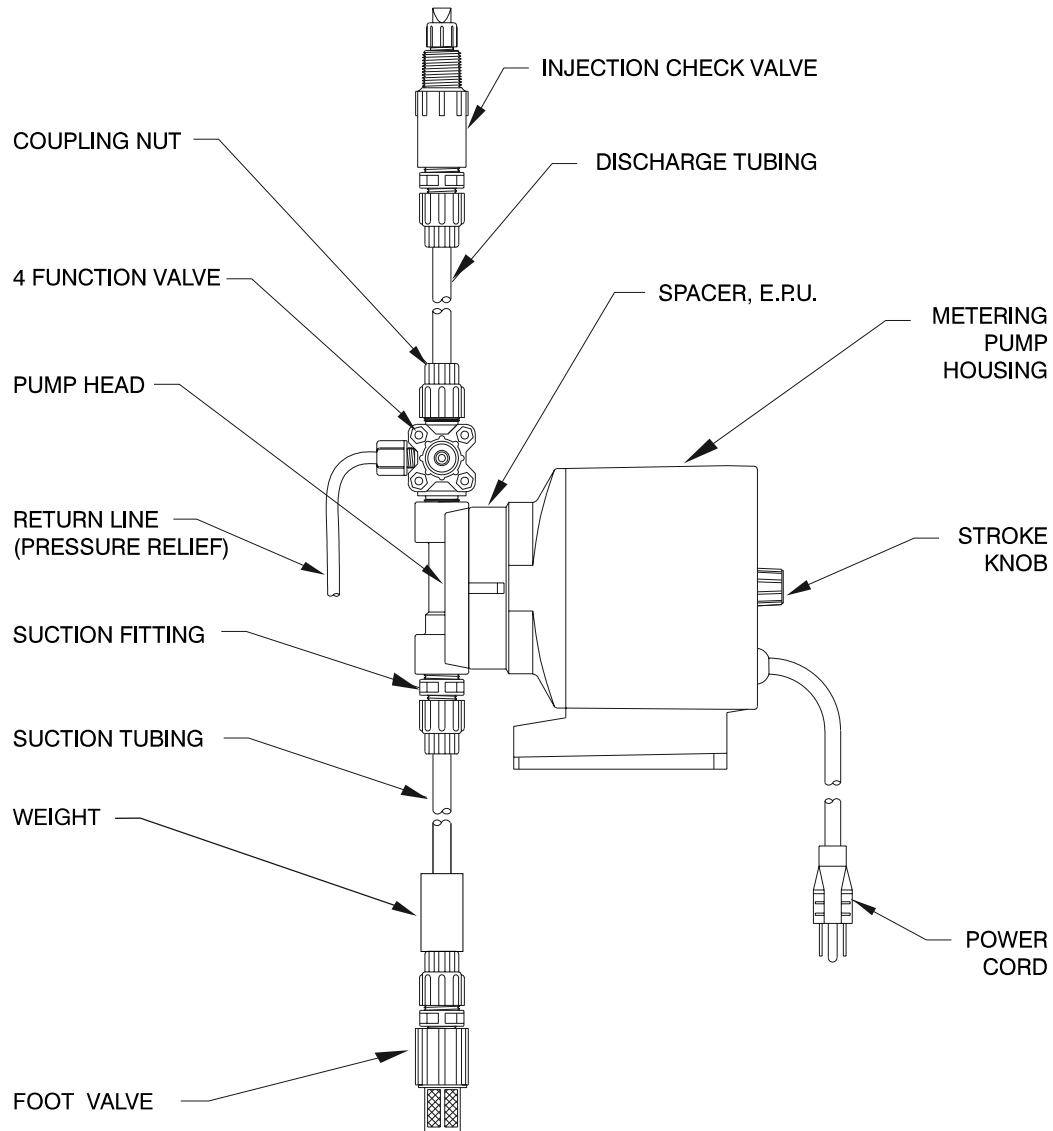


Instruction **Supplement**

Series P0

Electronic Metering Pump



Metering Pump Component Diagram

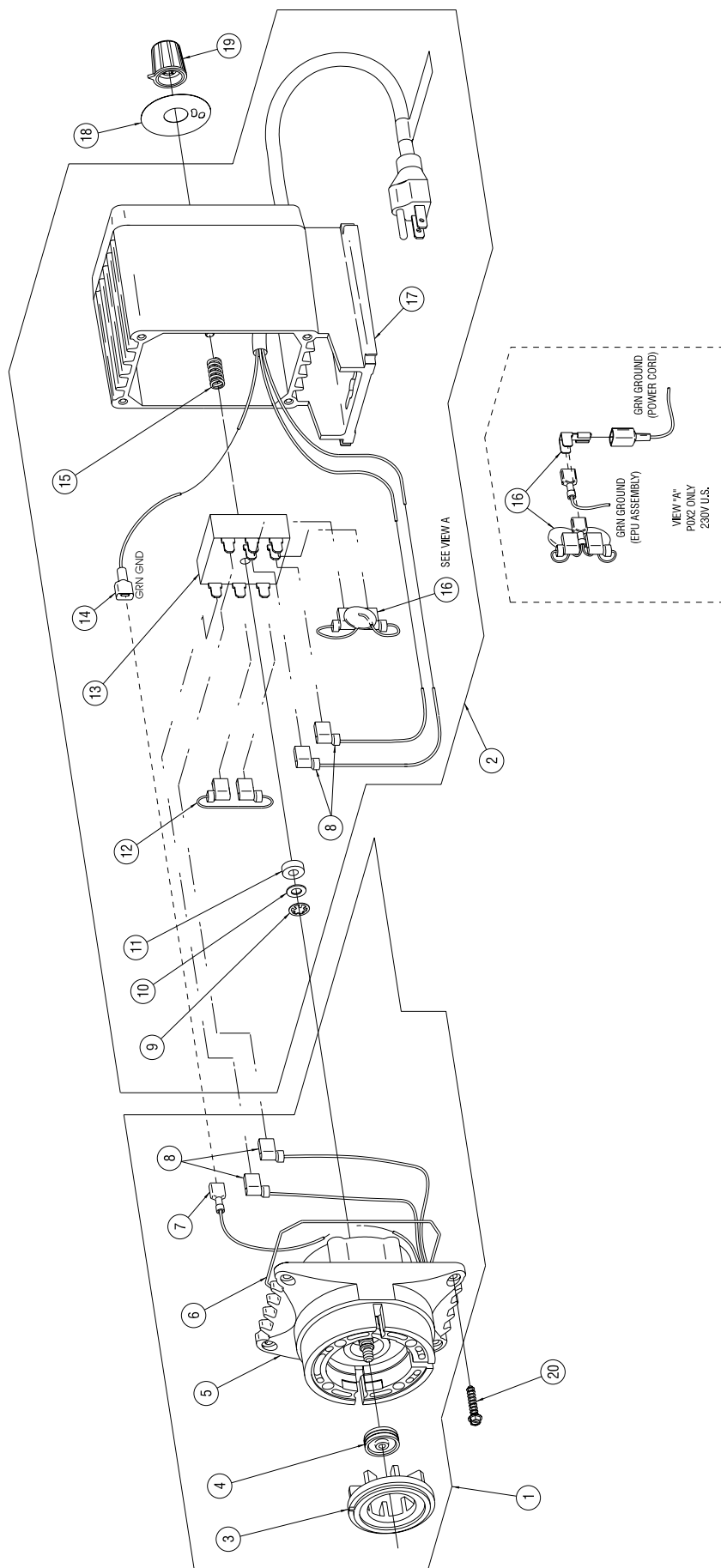


**8 Post Office Square
Acton, MA 01720 USA
TEL: (978) 263-9800
FAX: (978) 264-9172
<http://www.lmipumps.com>**



Replaces same of Rev. A 4/97
1843.B 6/01

Series P0 Drive Assembly Exploded View Diagram



Series P0 Drive Assembly Parts List

Key No.	Model	Part No.	Description	Qty.	
1	P021	30107	EPU w/Disk ,0.5	1	
	P022, P023, P025, P026, P027	30108	EPU w/Disk ,0.5	1	
	P031	30109	EPU w/Disk ,0.9	1	
	P032, P033, P035, P036, P037	30110	EPU w/Disk, 0.9	1	
	P041	30240	EPU w/Disk, 0.5	1	
	P042, P043, P045, P046, P047	30241	EPU w/Disk, 0.5	1	
	P051	30242	EPU w/Disk, 0.9	1	
	P052, P053, P055, P056, P057	30243	EPU w/Disk, 0.9	1	
	P061	33338	EPU w/Disk, 1.8	1	
	P062, P063, P065, P066, P067	31781	EPU w/Disk, 1.8	1	
	2	P021, P031	36368	Housing Assembly w/Pulser, 115V	1
		P022, P032	36369	Housing Assembly w/Pulser, 230V US	1
		P023, P033	36370	Housing Assembly w/Pulser, 230V DIN	1
		P025, P035	36371	Housing Assembly w/Pulser, 240V UK	1
		P026, P036	36372	Housing Assembly w/Pulser, 250V AUST	1
		P027, P037	36373	Housing Assembly w/Pulser, 230V SWISS	1
		P041, P051, P061	36374	Housing Assembly w/Pulser, 115V	1
P042, P052, P062		36375	Housing Assembly w/Pulser, 230V US	1	
P043, P053, P063		36376	Housing Assembly w/Pulser, 230V DIN	1	
P045, P055, P065		36377	Housing Assembly w/Pulser, 240V UK	1	
P046, P056, P066		36378	Housing Assembly w/Pulser, 250V AUST	1	
P047, P057, P067		36379	Housing Assembly w/Pulser, 230V SWISS	1	
3		P02, P04	29445	Disk, 0.5	1
		P03, P05	29437	Disk, 0.9	1
		P06	29442	Disk, 1.8	1
		P0	10973	Seal	1
5		P021, P031	30530	EPU	1
	P022, P023, P025, P026, P027	30531	EPU	1	
	P032, P033, P035, P036, P037				
	P041, P051	30154	EPU	1	
	P042, P043, P045, P046, P047	30155	EPI	1	
	P052, P053, P055, P056, P057				
	P061	31862	EPU	1	
	P062, P063, P065, P066, P067	31131	EPU	1	

Key No.	Model	Part No.	Description	Qty.
6	P0	10166	O-Ring	1
	P0	10182-1	Wire Terminal (Female)	1
	P0	25070-1	Wire Terminal (Flag)	4
	P0	10422	Retaining Ring	1
	P0	25963	Washer, Nylon	1
	P0	30391	Washer, Rubber	1
	P02, P03	29797	Wire Assembly	1
	P0	36254	Pulser	1
	P0	10368-1	Wire Terminal (Male)	1
	P0	25414	Spring	1
	P021, P031, P041, P051, P061	10626	Varistor Assembly, 115V	1
	P022, P032, P042, P052, P062	31255	Varistor Assembly, 230V US	1
	P023, P033, P043, P053, P063	10627	Varistor Assembly, 230-250V	1
	P025, P035, P045, P055, P065			
	P026, P036, P046, P056, P066			
P027, P037, P047, P057, P067				
17	P021, P031, P041, P051, P061	36380	Housing Assembly, 115V	1
	P022, P032, P042, P052, P062	36381	Housing Assembly, 230V US	1
	P023, P033, P043, P053, P063	36382	Housing Assembly, 230V DIN	1
	P025, P035, P045, P055, P065	36383	Housing Assembly, 240V UK	1
	P026, P036, P046, P056, P066	36384	Housing Assembly, 250V AUST	1
	P027, P037, P047, P057, P067	36385	Housing Assembly, 230V SWISS	1
	P02	30418	Stroke Dial	1
	P03	31545	Stroke Dial	1
	P04, P05	31126	Stroke Dial	1
	P06	31127	Stroke Dial	1
	P0	30295	Stroke Knob	1
20	P0	30306	Screw	4

