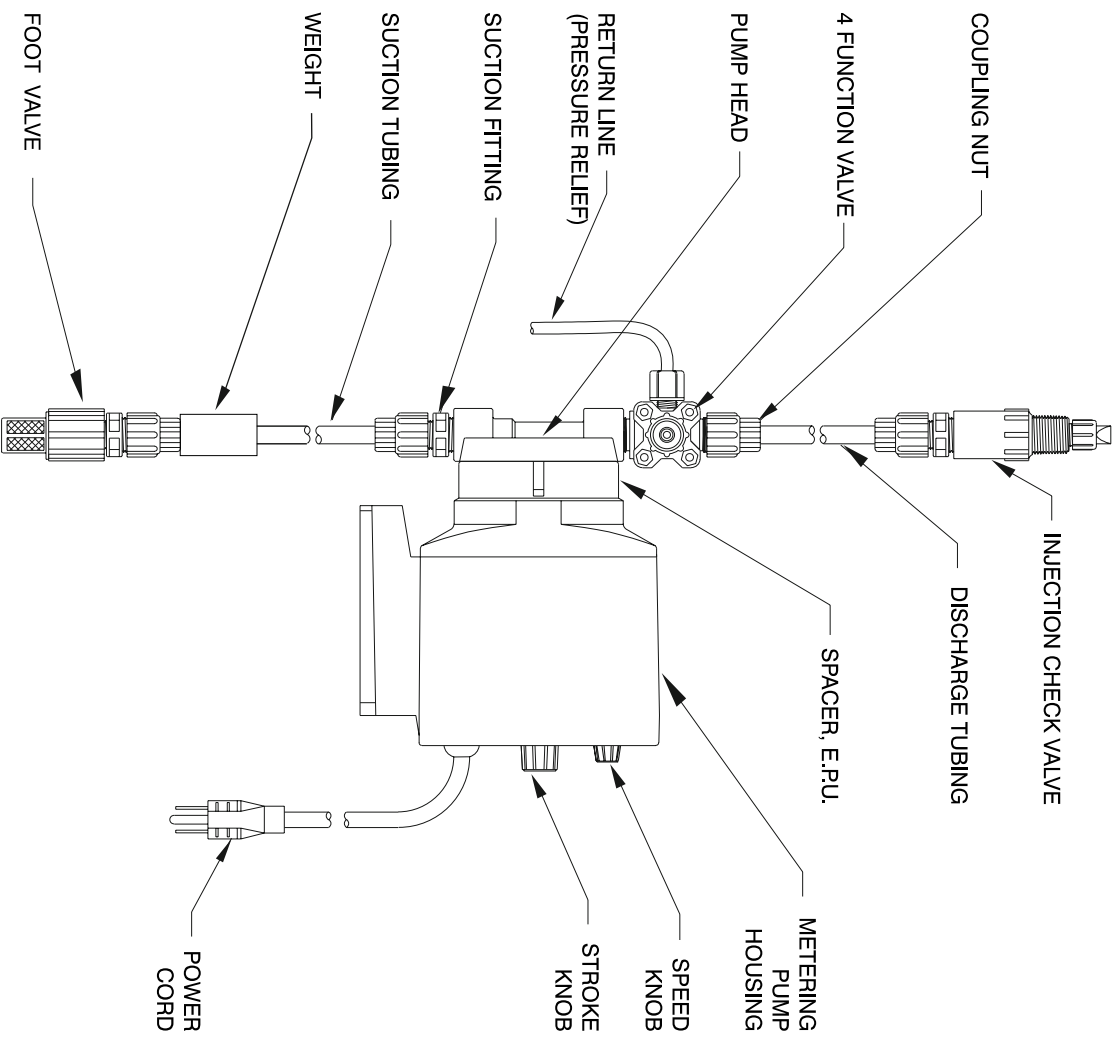


Instruction **Supplement**

Series P1

Electronic Metering Pump



Metering Pump Component Diagram



8 Post Office Square
Acton, MA 01720 USA
TEL: (978) 263-9800
FAX: (978) 264-9172
<http://www.lmipumps.com>

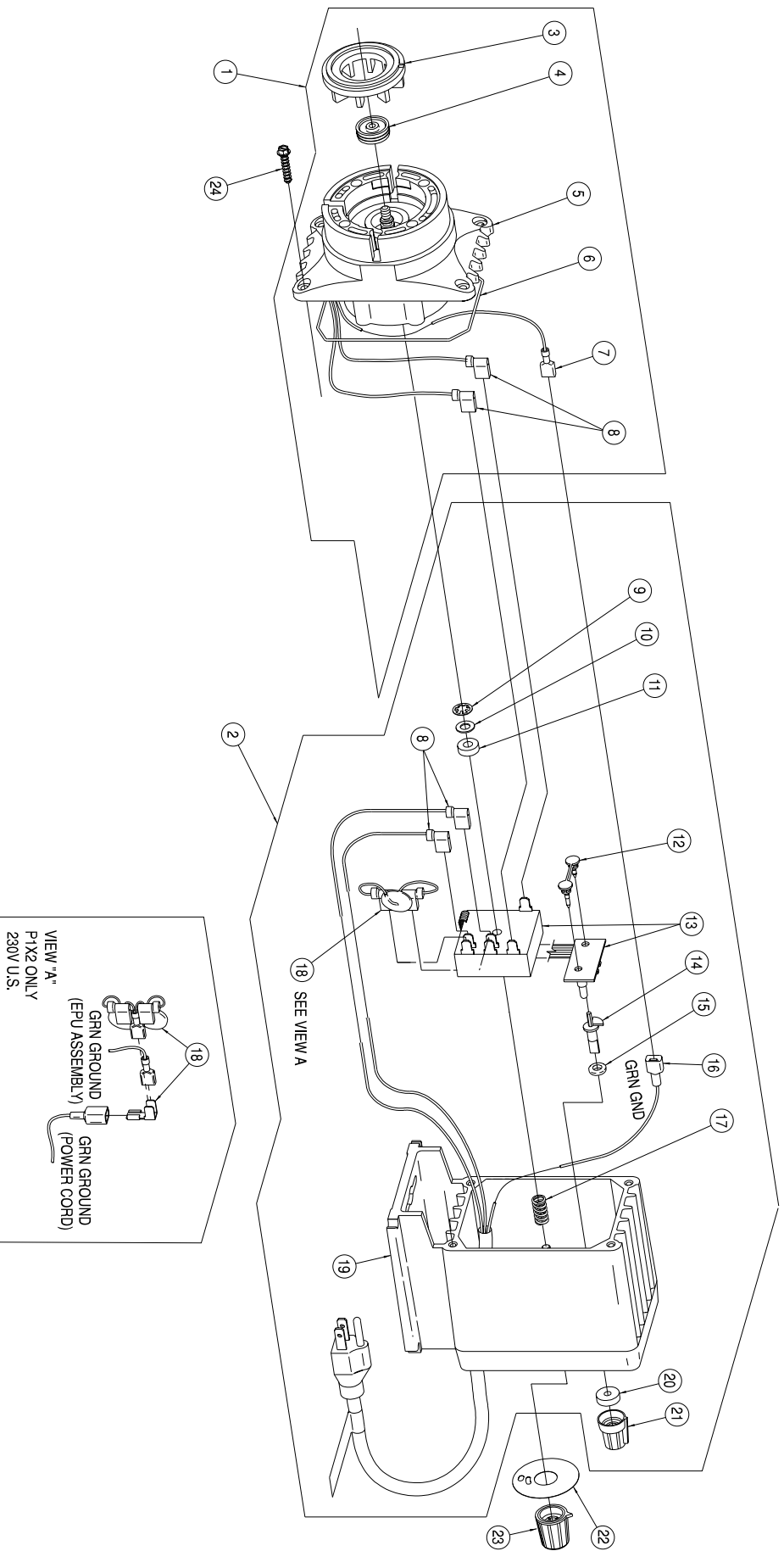
Replaces same of Rev. A 4/97
1842. B 2/00



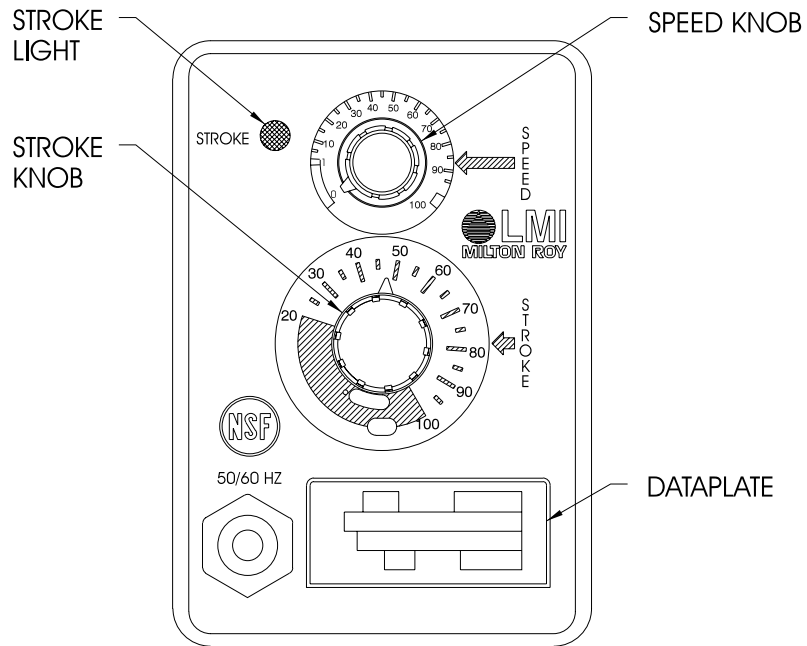
Series P1 Drive Assembly Parts List

KEY NO	MODEL	PART NO	DESCRIPTION	QTY	Key No.	Model	PART No.	Description	Qty.
1	P121	30107CE	EPU W/DISK 0.5	1	14	P1	35743	SPEED SHAFT	1
	P123, P125, P127	30108CE	EPU W/DISK 0.5	1	15	P1	34497	O-RING	1
	P131	30109CE	EPU W/DISK 0.9	1	16	P1	35188	WIRE TERMINAL (MALE)	1
	P133, P135, P137	30110CE	EPU W/DISK 0.9	1	17	P1	25414	SPRING	1
	P141	30240CE	EPU W/DISK 0.5	1	18	P121, P131, P141, P151, P161 P123, P133, P143, P153, P163 P125, P135, P145, P155, P165 P127, P137, P147, P157, P167	35243	MOV/CAP ASM, 115V	1
	P143, P145, P147	30241CE	EPU W/DISK 0.5	1			35237	MOV/CAP ASM, 230V	1
	P151	30242CE	EPU W/DISK 0.9	1			35237	MOV/CAP ASM, 230V	1
	P153, P155, P157	30243CE	EPU W/DISK 0.9	1			35237	MOV/CAP ASM, 230V	1
	P161	33338CE	EPU W/DISK 1.8	1	19	P121, P131, P141, P151, P161 P123, P133, P143, P153, P163 P125, P135, P145, P155, P165 P127, P137, P147, P157, P167	36797	HOUSING ASSEMBLY, 115V	1
	P163, P165, P167	31781CE	EPU W/DISK 1.8	1			36798	HOUSING ASSEMBLY, 230V DIN	1
36799							HOUSING ASSEMBLY, 240V UK	1	
				36800			HOUSING ASSEMBLY, 230V SWISS	1	
2	P121, P131	36749	HOUSING ASSEMBLY W/PULSER, 115V	1	20	P1	30803	GASKET	1
	P123, P133	36750	HOUSING ASSEMBLY W/PULSER, 230V DIN	1	21	P1	30709	SPEED KNOB	1
	P125, P135	36751	HOUSING ASSEMBLY W/PULSER, 240V UK	1	22	P12 P13 P16	30418	STROKE DIAL	1
	P127, P137	36752	HOUSING ASSEMBLY W/PULSER, 230V SWISS	1			31545	STROKE DIAL	1
	P141, P151, P161	36734	HOUSING ASSEMBLY W/PULSER, 115V	1			31127	STROKE DIAL	1
	P143, P153, P163	36742	HOUSING ASSEMBLY W/PULSER, 230V DIN	1	23	P1	30295	STROKE KNOB	1
	P145, P155, P165	36743	HOUSING ASSEMBLY W/PULSER, 240V UK	1					30306
	P147, P157, P167	36744	HOUSING ASSEMBLY W/PULSER, 230V SWISS	1	24	P1	30306	SCREW	4
3	P12, P14	29445	DISK, 0.5	1					
	P13, P15	29437	DISK, 0.9	1					
	P16	29442	DISK, 1.8	1					
4	P1	10973	SEAL	1					
5	P121, P131	30530CE	EPU	1					
	P123, P125, P127	30531CE	EPU	1					
	P133, P135, P137	30531CE	EPU	1					
	P141, P151	30154CE	EPU	1					
	P143, P145, P147	30155CE	EPU	1					
	P153, P155, P157	30155CE	EPU	1					
	P161	31862CE	EPU	1					
P163, P165, P167	31131CE	EPU	1						
6	P1	10166	O-RING	1					
7	P1	35189	WIRE TERMINAL (FEMALE)	1					
8	P1	35190	WIRE TERMINAL (FLAG)	4					
9	P1	10422	RETAINING RING	1					
10	P1	25963	WASHER, NYLON	1					
11	P1	30391	WASHER, RUBBER	1					
12	P1	35744	DUAL PIN	1					
13	P1	36255	PULSER	1					

Series P1 Drive Assembly Exploded View Diagram



Series P1 Control Panel Detail



Series P1 Wiring Diagram

