

For use on LMI Series C
chemical metering pumps.

CAUTION

When pumping chemicals make certain that all tubing is securely attached to the fittings. It is recommended that tubing or pipe lines be shielded to prevent possible injury in case of rupture or accidental leakage. Always wear protective clothing when working on or near chemical metering pumps.

NUMBER 25 LIQUID HANDLING ASSEMBLY

A. INSTALLING INJECTION CHECK VALVE

1. The injection check valve should always be installed as close as possible to the point of chemical injection, at the very end of the tubing run.

CAUTION

Do not operate pump using 25 Liquid Handling Assembly without injection check valve properly installed.

2. Purpose of injection check valve is to prevent backflow from *treated line*.
3. A 1/2" NPT female connection or tee will accept the injection/check valve.
4. In order to insure correct seating of the ball inside the check valve, the injection check valve should be installed upwards, in the direction of flow.

B. CONNECTING DISCHARGE TUBING

Note: Cut tubing to length needed for discharge line making sure sufficient amount is left for suction line.

1. Route tubing from injection check valve to chemical metering pump making sure it does not touch hot surfaces, sharp surfaces, or is bent so sharply that it kinks.
2. Slide small end of coupling nut onto tubing.
3. Push tubing over tapered nozzle of pump head so that tubing flares out and reaches the shoulder. (If tubing is stiff from cold, dip end in hot water).
4. Slide down the coupling nut until threads are engaged. Tighten by hand until tubing is held securely in place.

CAUTION

*Excessive force will crack or distort fittings.
DO NOT USE PIPE WRENCH.*

5. Follow the same procedure for connecting tubing to injection valve.

C. CONNECTING SUCTION TUBING

1. Cut suction tubing to length necessary between suction valve of chemical metering pump and foot valve. Foot valve should just sit at the bottom of chemical container. Maximum recommended vertical suction lift is 5 ft. (1.5m).
2. Follow same procedure (see B) in connecting suction tubing to suction valve and foot valve.
3. If a suction tube straightener is desired, one may be fabricated from a 3 ft. (1m) piece of 3/4" Schedule 80 Polypropylene pipe.
4. Cut pipe to length and insert suction tubing through pipe.

D. PRIMING

1. Temporarily remove tubing from injection check valve and hold the end of tubing so it is above pump level.
2. Set pump at maximum speed and 100% stroke and start pump.
3. As soon as chemical is visible through translucent discharge tubing just past the discharge valve, stop the pump.
4. Pump is now primed.
5. Reconnect tubing to injection check valve.

Note:

- (a) Pump is normally self-priming if suction lift is no more than 5 ft. (1.5m), valves in the pump are wet with water (Pump is shipped from factory with water in pump head and therefore valves are wet) and the above steps (D1 thru D3) are followed.
- (b) If the pump does not self prime, remove discharge valve housing and ball and pour water or chemical slowly into discharge port until it is filled. Follow steps D2 through D5 thereafter.

Specifications subject to change without notice.
Printed in U.S.A.

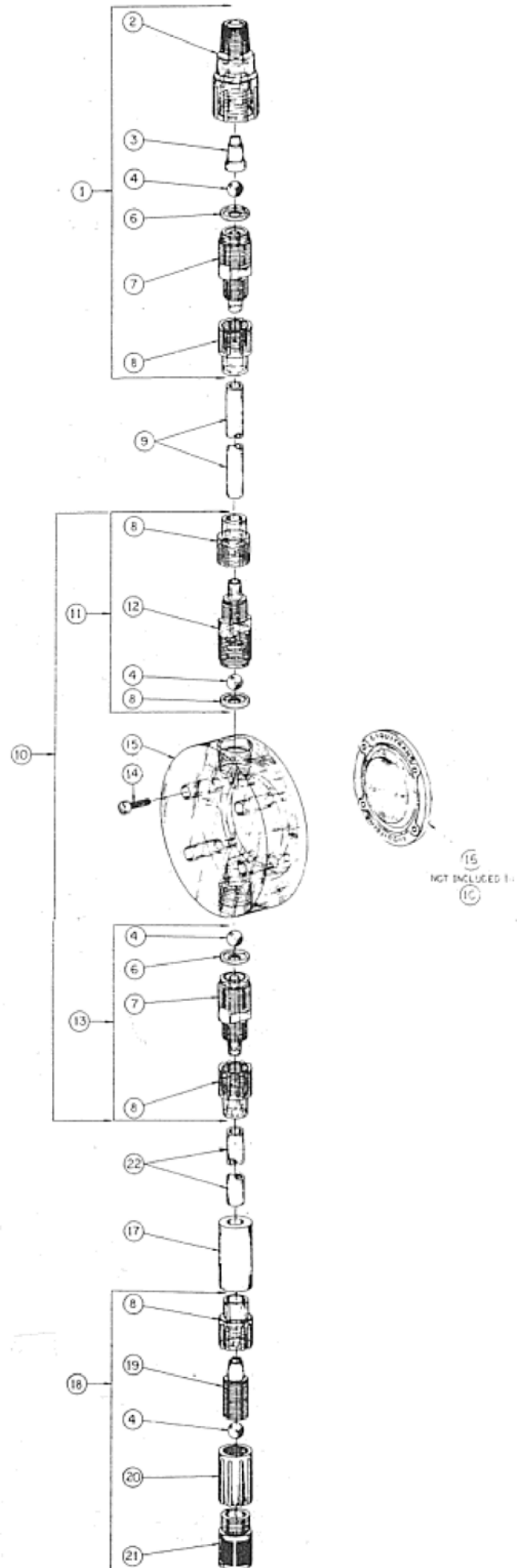


LIQUID METRONICS INCORPORATED
3 JONES ROAD, WALTHAM, MASS. 02154 USA
(617) 891-0690 TLX 92-3478

1102
3C179

PARTS LIST NO. 25 LIQUID HANDLING ASSEMBLY

Ref. No.	Part No.	Description	Quantity
1	25153	Injection Check Valve Assembly	1
2	25108	Injector Fitting, Polypropylene	1
3	10309*	Flapper, green Tefzel	1
4	10138*	Ball, glass	4
6	10328*	Seal Ring, Fluorosilicone	3
7	25106*	Valve Seat, Polypropylene	1
8	10411	Coupling Nut, Polypropylene	4
9	10142	Tubing, Polyethylene	16 ft. (4.9 m)
10	25150	Head Assembly, LE 25	1
11	25151	Discharge Valve Assembly, LE 25	1
12	25173	Valve Housing, Polypropylene	1
13	25152	Suction Valve Assembly, LE 25	1
14	10340	Screw, 10-24 x 3/4" S.S.	4
15	10681	Head, 3.0 SI Polypropylene	1
16	25319*	Liquifram, 3.0 SI Teflon Face	1
17	10322	Weight, Ceramic	1
18	25154	Foot Valve Assembly	1
19	10122	Fitting	1
20	10310	Foot Valve Seat, green Tefzel	1
21	10123	Strainer, Polypropylene	1



*PARTS INCLUDED IN
SPARE PARTS KIT NO.

SP-25