

# Liquid End Sheet

## LE-30/ LE-32/ LE-35T/ LE-36

When pumping solutions, make certain that all tubing is securely attached to the fittings. It is recommended that tubing or pipe lines be shielded to prevent possible injury in case of rupture or accidental damage. Always wear protective clothing and face shield when working on or near your metering pump.

**Note: See parts list for materials of construction**

### A. INSTALLING INJECTION CHECK VALVE

1. The purpose of the injection check valve is to prevent backflow from the treated line.
2. A ½" NPT female fitting with sufficient depth will accept the injection check valve.
3. To insure correct seating of the ball inside the injection check valve, the injection check valve should be installed upwards (vertically) into bottom of the pipe.

### B. CONNECTING DISCHARGE TUBING

**NOTE:** Cut tubing to length needed for discharge line.

1. Route tubing from the injection check valve to the metering pump, making sure it does not touch hot or sharp surfaces, or is bent so sharply that it kinks.
2. Slide the small end of the coupling nut onto tubing, then slide on the clamp ring.
3. Push tubing on the valve housing nozzle so that tubing flares out and butts up against valve housing and will not go any further.
4. Slide the clamp ring and coupling nut to the threads and engage. While pushing the tubing onto the valve housing nozzle, tighten the coupling nut by hand until tubing is held securely in place.

**Excessive force will crack or distort fittings.  
DO NOT USE PIPE WRENCH.**

### C. CONNECTING SUCTION TUBING

1. Cut suction tubing to a length so that the foot valve hangs just above the bottom of the solution container. Maximum recommended vertical suction lift is 5 ft (1.5 m).
2. Follow same procedure in connecting suction tubing to suction valve and foot valve (see **B. Connecting Discharge Tubing**).

### D. PRIMING

1. Temporarily remove tubing from the injection check valve and hold the end of tubing so it is above the level of the pump.
2. Start pump. Set at 80% speed and 100% stroke.
3. As soon as solution is visible through translucent discharge tubing, just past the discharge valve, stop the pump.
4. The pump is now primed.
5. Reconnect tubing to the injection check valve.

**NOTE:**

- (a) Pump is normally self-priming if suction lift is not more than 5 ft (1.5 m), valves in the pump are wet with water (pump is shipped from factory with water in pump head) and the above steps (**D. Priming**) are followed.
- (b) If the pump does not self prime, remove discharge valve housing and ball and pour water or solution slowly into discharge port until head is filled. Follow step **D. Priming** thereafter.



8 Post Office Square  
Acton, MA 01720 USA  
TEL: (978) 263-9800  
FAX: (978) 264-9172  
<http://www.lmipumps.com>



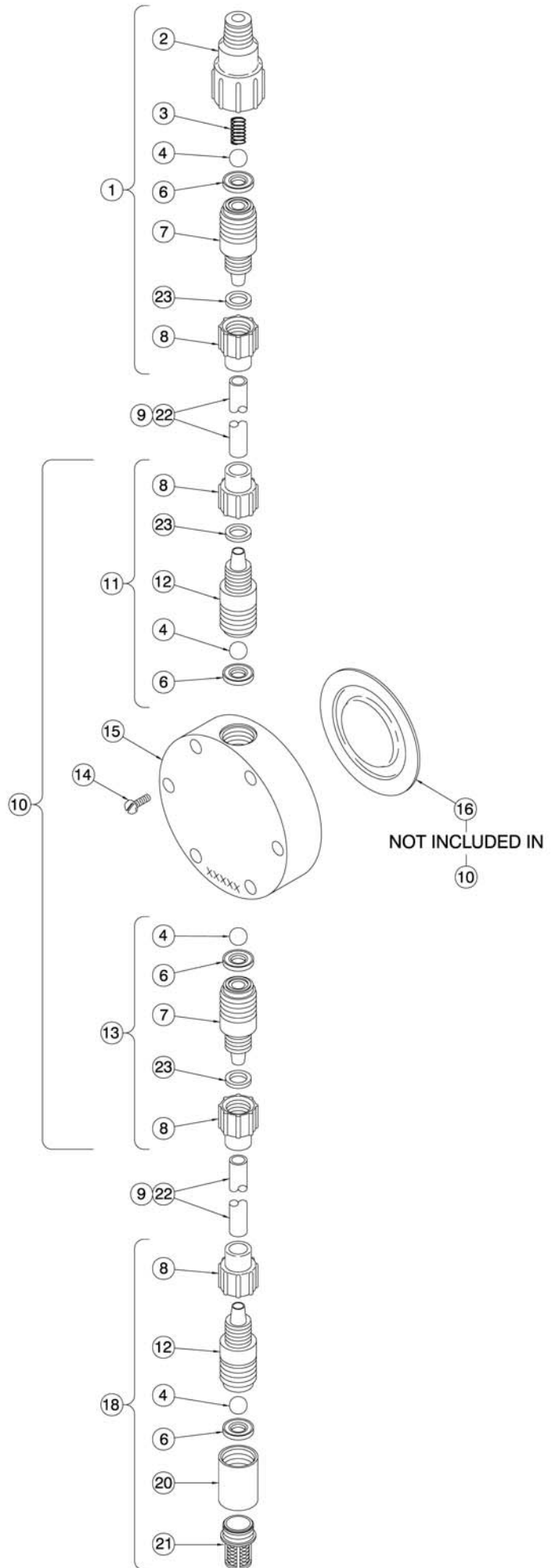
Replaces same of Rev. G 4/97  
1378.H X/98

KEY NO.	PART NO.	DESCRIPTION	QUANTITY			
			LE-30	LE-32	LE-35T	LE-36
1	26713	Injection Check/Valve Assembly	1			1
	26758	Injection Check/Valve Assembly			1	
	33481	Injection Check/Valve Assembly		1		
2	25108	Injector Fitting, Polypropylene	1		1	1
	31936	Injector Fitting, Polypropylene		1		
3	10339*	Spring, PVDF	1	1	1	1
4	10138*	Ball, Ceramic .500	4	4	4	4
6	25128*	Seal Ring, PTFE, .500	4	4	4	4
7	10206	Valve Seat, PVC, .500	2			2
	25106	Valve Seat, Polypropylene, .500			2	
	31937	Valve Seat, PVDF		2		
8	10411	Coupling Nut, PP	4	4	4	4
9	10142-10	Tubing, .500" O.D. Polyethylene	1			
	10142-16	Tubing, .500" O.D. Polyethylene		1	1	1
10	25979	Head Assembly, LE-30	1			
	33538	Head Assembly, LE-32		1		
	25980	Head Assembly, LE-35T			1	
	25976	Head Assembly, LE-36				1
11	25411	Discharge Valve Assembly	1			1
	25156	Discharge Valve Assembly			1	
	33536	Discharge Valve Assembly		1		
12	10273	Valve Housing, PVC, .500	2			2
	25173	Valve Housing, Polypropylene, .500			2	
	31938	Valve Housing, PVDF		2		
13	25412	Suction Valve Assembly	1			1
	25157	Suction Valve Assembly			1	
	33482	Suction Valve Assembly		1		
14	10340	Screw, 10-24 x 3/4" S.S.	6	6	6	6
15	25718	Head, 6.0 SI, Plexiglas®	1			
	25906	Head, 6.0 SI, Polypropylene			1	
	25905	Head, 6.0 SI, PVC				1
	32234	Head, 6.0 SI, PVDF		1		
16	25719*	Liquifram™, 6.0 SI, PTFE Face	1	1	1	1
18	25977	Foot Valve Assembly	1			1
	25154	Foot Valve Assembly			1	
	33480	Foot Valve Assembly		1		
20	25600	Foot Valve Seat, Polypropylene	1	1	1	1
21	10123	Strainer, Polypropylene	1	1	1	1
22	10141-06	Tubing, .500" O.D. Vinyl	1			
23	37203	Clamp Ring	3	3	3	3
---	32700	Suction Tubing Straightener (not shown)	1	1	1	1

\*Parts included in Spare Parts Kit Sp-U6.

**NOTE:**

Threaded connections into pump head are 1"-12 straight threads. **DO NOT USE TEFLON® TAPE.** These joints are sealed by seal ring valve seats.





**8 Post Office Square**  
**Acton, MA 01720 USA**  
**TEL: (978) 263-9800**  
**FAX: (978) 264-9172**  
**<http://www.lmipumps.com>**

© 1998 LMI Milton Roy - All Rights Reserved  
Printed in USA  
Specifications subject to change without notice.

Liquifram is a trademark of Liquid Metronics, Inc.  
Plexiglas is a trademark of Atohaas North America, Inc.  
Teflon is a registered trademark of E. I. du Pont de Nemours & Co., Inc.