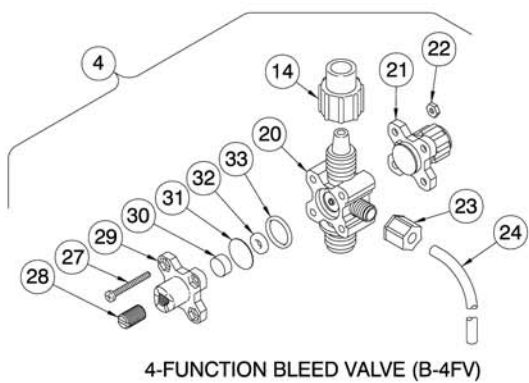
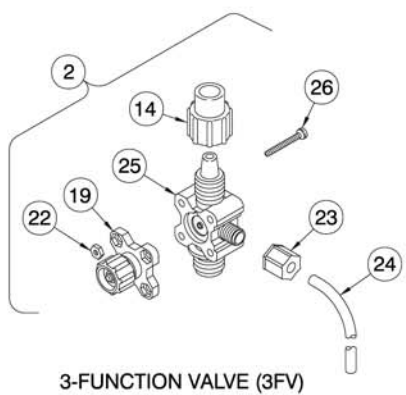
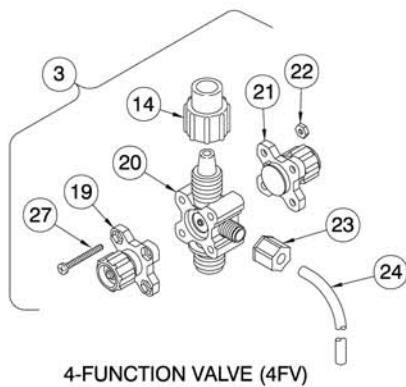

Liquid End **Sheet**
LE - 310 Series / 3.0 (IN²)



Liquid End **Sheet**

Key No.	Part No.	Part Description	Quantity											
			310TI	310SI	311TI	311SI	312TI	312SI	313TI	313SI	310BI	311BI	312BI	313BI
1	37357	Inj Ck Valve, PGC™	1	1	1	1					1	1		
	37358	Inj Ck Valve, PVDF					1	1	1	1			1	1
2	36263	3FV, PGC™ 1/2	1		1									
	36267	3FV, PVDF 1/2					1		1					
3	36273	4FV, PGC™ 1/2		1		1								
	36277	4FV, PVDF 1/2						1		1				
4	37074	B/4FV, PGC™									1	1		
	37075	B/4FV, PVDF											1	1
5	36308	CV .375 PGC™/Polyprel®	3	3	3	3					3	3		
	36307	CV .375 PVDF/Polyprel®					3	3					3	
	36306	CV .375 PVDF/PTFE							3	3				3
6	36357	Suction Valve, PGC™	1	1	1	1					1	1		
	36421	Suction Valve, PVDF					1	1					1	
	36360	Suction Valve, PVDF							1	1				1
7	36355	Foot Valve, PGC™	1	1	1	1					1	1		
	36419	Foot Valve, PVDF					1	1					1	
	36358	Foot Valve, PVDF							1	1				1
8	36159	Head Acrylic 3.0	1	1							1			
	36127	Head PGC™ 3.0			1	1						1		
	36128	Head PVDF 3.0					1	1	1	1			1	1
9	31419	Liquifram™ 3.0	1	1	1	1	1	1	1	1	1	1	1	1
11	37350	Inj Fitting PGC™	1	1	1	1					1	1		
	37351	Inj Fitting PVDF					1	1	1	1			1	1
12	37116	Valve Housing PGC™	3	3	3	3					3	3		
	37117	Valve Housing PVDF					3	3	3	3			3	3
14	10411	Coupling Nut	4	4	4	4	4	4	4	4	4	4	4	4
15	10142-16	Tubing .500 P.E.	1	1	1	1	1	1	1	1	1	1	1	1
	27142-16	Tubing .500 U.V.P.E.	Black, UV resistant tubing - change "I" to "U" (for example 311SI to 311SU)											
16	36204	Foot Valve Coupling	1	1	1	1	1	1	1	1	1	1	1	1
17	10123	Strainer	1	1	1	1	1	1	1	1	1	1	1	1
18	10340	Screw, Head	4	4	4	4	4	4	4	4	4	4	4	4
19	36866	P/R Cap Asm.	1	1	1	1	1	1	1	1				
20	37230	4FV Body, PGC™		1		1					1	1		
	37231	4FV Body, PVDF						1		1			1	1
21	36280	A/S Cap Asm.		1		1		1		1	1	1	1	1
22	25628	Nut	4	4	4	4	4	4	4	4	4	4	4	4
23	25631	Coupling Nut	1	1	1	1	1	1	1	1	1	1	1	1
24	25636-10	Tubing .250 P.E.	1	1	1	1	1	1	1	1	1	1	1	1
	28636-10	Tubing .250 U.V.P.E.	Black, UV resistant tubing - change "I" to "U" (for example 311SI to 311SU)											
25	37232	3FV Body, PGC™	1		1									
	37233	3FV Body, PVDF					1		1					
26	35716	Screw, 3FV	4		4		4		4					
27	25627	Screw, 4FV		4		4		4		4	4	4	4	4
28	34876	Screw, B/4FV			1			1			1	1	1	1
29	32171	Cap			1			1			1	1	1	1
30	34868	Disc			1			1			1	1	1	1
31	32173	Diaphragm			1			1			1	1	1	1
32	32175	O-Ring			1			1			1	1	1	1
33	32176	O-Ring			1			1			1	1	1	1
34	27352	Flapper Valve	1	1	1	1	1	1	1	1	1	1	1	1
35	37349	Inj Ck Valve Kit	1	1	1	1	1	1	1	1	1	1	1	1
---	10322	Weight (not shown)	1	1	1	1	1	1	1	1	1	1	1	1
---	37203	Clamp Ring (not shown)	1	1	1	1	1	1	1	1	1	1	1	1



Washer on Bottom
Install 3-piece cartridge
valve as shown in
direction of flow arrow

